



## (3) Day Morae SMED Training

### Overview:

This training is targeted primarily at those that will facilitate Kaizen events using Morae. For these individuals familiarity with the analysis software is critical to your success. We'll cover the (3) Morae tabs analyze, graph & present tabs and give you a lot of hands-on exercises and opportunities to help teach the class!

### Who Should Attend

- Managers, Champions
- Lean Practitioners
- Six Sigma Belts
- Continuous Improvement (CI) Practitioners

### Training Details:

1. Getting started Manager
  - Learn how to log tasks & markers
  - Learn how to analyze individual and team data
  - Learn some standard SMED graphs and how to export data
2. Study configurations
  - Learn critically important skill of how to define and number individual tasks – but also team phase tasks
  - Learn what's too much detail – and what's not enough
3. Analyze session data
  - Focus on the  $Q \times A = E$  element of the analysis
  - Prioritize data by type of opportunity
  - Assign 'go do' action items by opportunity type – learn how to better organize Kaizen teams for action



### Location:

Refer to 'Pricing & location summary'

### Other Specifics:

Class size 12 – 16 participants

Virtual training length for this course is  
(12) hours total

### At a Glance:

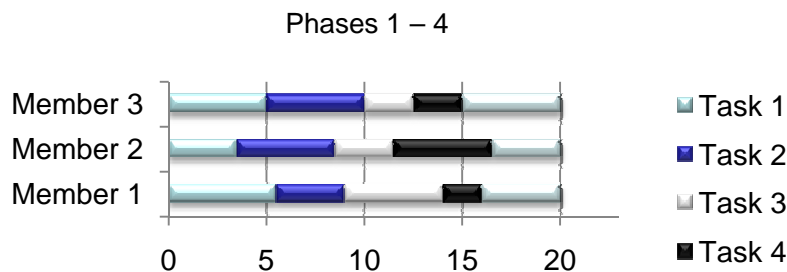
- (3) day training
- Understand Morae Manager
- Understand how to set up configuration files & survey questions
- (3) live hands-on Morae recording training simulations
- Course pre-reading required



## (3) Day Morae SMED Training

We use Morae software. Morae allows the overall analysis to be done in 3 – 4 less time; when you have a team of Kaizen members ‘on the clock’ this time savings is important. More accurate than manual methods? Are you kidding?

Morae allows us to tap the intellect of the team by breaking the group into several small groups and having teams analyze the video placing both tasks & markers. Want more information? Contact us for a webinar demo!



**Data!**

1. Quantify waste & action items
2. Overall team tasks (phases)
3. Work content for each team member

- Data quantified & graphed within Morae

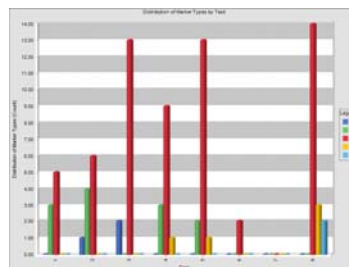
### Waste Categories:

By now you’ve likely heard of the 8 wastes: Question: who cares what the category is?

Isn’t a better question – what are we going to do about it?

In our analysis we *quantify* the total time for wastes that we observe, but instead of coding the waste category, we record what the associated action should be to resolve it. Some standard categories we use are:

- I-information handling
- M - materials
- P – people (teamwork opportunities)
- Q - equipment
- T – tools



What do we do?

This chart tells us

what action

items to attack.